

Community Park

Slide Deck preview of a proposed play environment



WELCOME

Community Park serves the North Port downtown area, filling community-based recreation, children's play and open-space needs. Designed to include many amenities including walking paths, donor recognition, gazebos and picnic areas.

EXPLORE

- A** Park Entry
MAP/TOC of Community Park
- B** 5-12 Play Area
Explore equipment options
- C** Nature Play Area
View two-phase design
- D** 2-5 Play Area
Discover featured activities
- E** Donor Area
Learn more about fundraising



WELCOME

Community Park serves the North Port downtown area, filling community-based recreation, children's play and open-space needs. Designed to include many amenities including walking paths, donor recognition, gazebos and picnic areas.

EXPLORE

- A** **Park Entry**
MAP/TOC of Community Park
- B** **5-12 Play Area**
Explore equipment options
- C** **Nature Play Area**
View two-phase design
- D** **2-5 Play Area**
Discover featured activities
- E** **Donor Area**
Learn more about fundraising



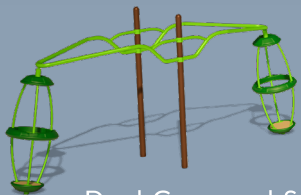
HIGHLIGHTS

This area is centered around a custom Playcraft Systems Tower, a staggering structure that any kid would want to play on! With the unlimited fun provided by a wide variety of climbers and slides, creativity and laughter are sure to follow.



Twist Tower Play System

Bug-eye lean-out window panels on enclosed tower.
96" super spiral slide.
Extra long tube slide with sky-ports.



Dual Gyro-pod Spinner



Bucket Spinner



HIGHLIGHTS

This space features two large wooden play towers as a high play-value centrepieces. Mixing modern design with classical whimsy through shared materials, packing a lot of vertical play and engaging children in high energy play.



Kompan Robina Witches Tower

Classic climbers & slides



Earthscape Timber Tower 2

Super Spiral & curve slides
Internal and external
climbers galore!



Log Jungle



HIGHLIGHTS

This area is designed with specific features to support early childhood development in a safe, supervised environment. Play activities include lower platform heights, age-appropriate challenges, and a mix of active and passive components.

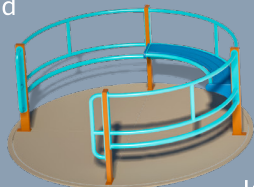


Little Ones' Play system

Shaded, and easy to climb.
Climb tube, two slides,
and multiple play panels.



SpinMAX Pod



Inclusive Merry-go-round

Musical Instruments



HIGHLIGHTS

This toddler village may be small and for small people, but it is full of variation and character. Built around simple themes like a Forest Shop or the tantalizingly Wizards Hideaway, the Robinia wood is put to good use in creating this inviting play space.



Kompan Robina Wizard's Hideaway

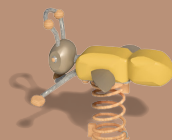
Shaded benches and table inside
Slide and raised playhouse



Toddler Activity Bench



Snail Spring Rider



Bee Spring Rider



Clover Steppers



Seat Spinner



HIGHLIGHTS

Designed in two phases, this area uses natural elements like logs, boulders, and plants for unstructured play, encouraging creativity, problem solving, and a connection to nature. Incorporate organic materials instead of solely manufactured equipment like slides and swings.

Nature Play Elements

A natural drainage area is reinforced with chunky gravel and boulders. Grow shrubs and mosses. Logs and rocks are placed to create natural exploration opportunities.

Incorporated Equipment

Earthscapes Songbird play hut/reading nook.
Log crawl-through tunnel.
GRFC climbing rock.



HIGHLIGHTS

Designed in two phases, this area uses natural elements like logs, boulders, and plants for unstructured play, encouraging creativity, problem solving, and a connection to nature. Incorporate organic materials instead of solely manufactured equipment like slides and swings.

Nature Play Elements

A natural drainage area is reinforced with chunky gravel and boulders. Grow shrubs and mosses. Logs and rocks are placed to create natural exploration opportunities.

Incorporated Equipment

Earthscapes Songbird play hut/reading nook.
Log crawl-through tunnel.
GRFC climbing rock.



HIGHLIGHTS

The donor program provides the gift of play with local donor support. Four donor walls are to be placed in a communal area acting as a second entry into the playground area.



The community has an opportunity to provide the gift of play!

Step 1 - Contact Us

Interested in supporting this initiative? Fill out our donation form to get started.

Step 2 - Donor Levels

All donations are welcome. Larger donations receive an acknowledgment plaque.

Step 3 - Acknowledgment

Give us the name(s) you would like displayed.



Donor Wall

"Port Community Park Support" is a 501(c)(3) charitable organization as defined by the IRS. No goods or services are provided in exchange.